

CLASSIFICATION

- Type IP-2
- IAEA SSR 6, 2018 Edition

ALLOWED CONTENTS

- Solid materials
- SCO-I, II materials
- LSA I and II materials
- LSA-III materials (exclusive use only)

Type IP-2 packaging for transport and storage of surface contaminated objects or low specific activity material, like contaminated tools, dismantled components, waste, ...

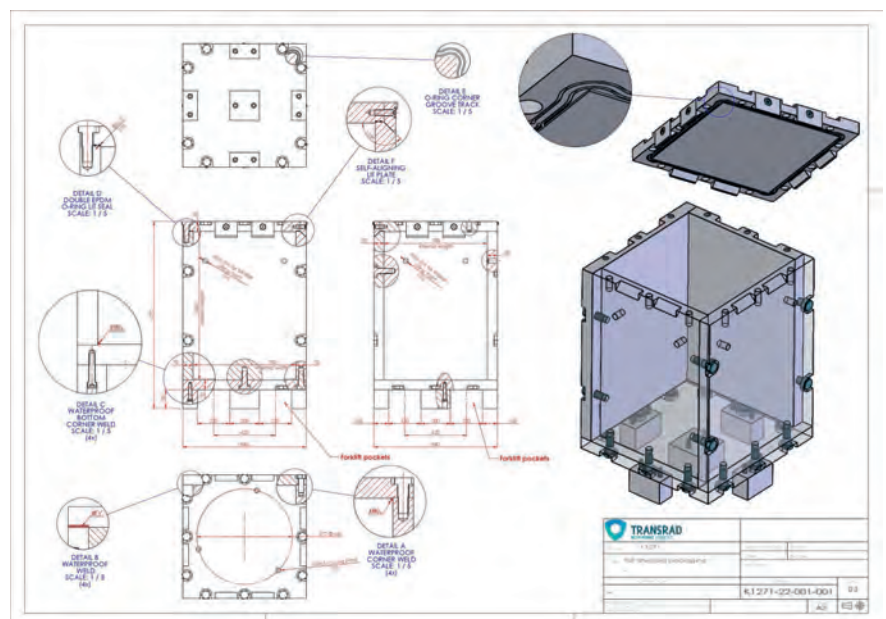
The packaging is providing a shielding ranging from 70 to 200mm eq steel.

Allowed transport modes: by land, sea or air.

The packaging can be handled by a lift truck or by a crane.

Dimensions

	Minimum inner dimensions	Maximum inner dimensions
Length	700 mm	1 900 mm
Width	700 mm	1 900 mm
Height	500 mm	1 900 mm



For more information on this packaging or other packagings, please contact us:

Transrad S.A. • Avenue de l'Espérance 1 - 6220 Fleurus (Belgium)

Tel.: +32 (0)71 82 97 59 • info@transrad.be